

# Silver Strings Dulcimer Society

## Soundboard

JUNE 2013 30 YEARS SHARING ACOUSTIC MUSIC July 1983-2013 Issue 338  
Website : [www.silverstrings.org](http://www.silverstrings.org)

### PRESIDENTS RAMBLINGS \_\_\_\_\_ Bob Niemczewski Hi Folks,

Well, the ODPC meeting that our club hosted went over very well with good food, friends and of course some afternoon jamming.

At our club meetings we have been starting off the sessions by playing Pig Ankle Rag, Larry's Waltz, and Washington Square. These are the songs that we will be playing on stage at The ODPC Funfest in Evert. We have added Young Roddy McCorley to the playlist so let's all be sharp and practice those songs.

On another note, the two awnings that our club ordered arrived today and I have them at our house. I will open them up and make sure they are in good working order. I'm hoping they will make life easier at our functions for set up and take downs.

On a sad note our deepest condolences go out to Steve Hadley on the passing of His mother Eleanor. Please keep him, his family and loved ones in your thoughts and prayers.

Glad to see the trees are popping with green leaves and the smell of summer festivals is in the air.

Peace Through Music . . . . . Bob

### NOTEJifications \_\_\_\_\_ V.P. Business

Well, spring is finally here! Playing music outdoors is so relaxing. Being able to practice my whistle outdoors might be considered a "blessing" to my husband Ed!! Hitting those high notes can be painful!

We are slowing down some as far as playdates go for the summer, but then festivals and campouts are coming up to take their place. I will have sign-up sheets out for June and July and August.

Hopefully a lot of members will be able to attend our SSDS campout as we have a fun time planned. Good food, good music, good friends...does life get any better!?

Happy Jammin'. . . . . Linda Osgood

### PURSE STRINGS \_\_\_\_\_ Treasurer

I can't believe that summer is finally upon us with the campout and festivals just around the corner. George Gonyo or I will accept your check or cash for the dinner at the Myers Lake campout on Saturday night. Our bank account is balanced and in the black. Good job everybody for continuing doing our play dates. . . . . Sally

### Welcome to New Member:

Jeff Despard of Royal Oak  
Is learning the Hammered Dulcimer

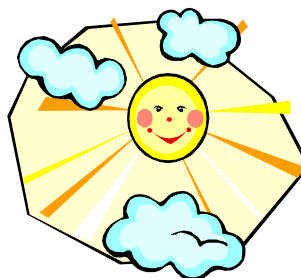
### VP PROGRAMS \_\_\_\_\_ George Gonyo

A big **thank you** for all who made this past Variety Night a success. We had a lot of food, and good music for you people who couldn't make this one. Another big **thank you** for all the help we had at this year's campout held at Myers Lake. Many hands make light work. See you all next month at Evert. Have a great Summer. June 21<sup>st</sup> marks the longest daylight hours for the year, as we head towards those Cold Frosty Morning's in winter.

### IT'S JUNE...LET'S CELEBRATE !

#### BIRTHDAYS

- 9...Mary Colgan
- 10...Diane Calhoun
- 18...Tom Koppin
- 27...Walt Jablonski
- 29...Linda Losse
- 30...Steve Hadley
- 30...Roger Davis



#### ANNIVERSARIES

- 20...Sherry & Morgan Humecky.....43<sup>rd</sup>



**MUSIC COORDINATOR** \_\_\_\_\_ Sharon McAuliffe

Members requesting recorded music so they can learn the repertoire should bring their own recording devices, request the music that they wish to record and it will be played during the meeting.

There is one more piece of music added to our Evert list in case we have time to fill. The list is: Larry's Waltz, Pig Ankle Rag, Washington Square and Young Roddy McCorley.

Corrected "Red Haired Boy" and "Tennessee Waltz" were sent out in the Dropbox and along with an email notification.

**NOTABLE NOTES** \_\_\_\_\_ Secretary  
**Board Meeting May 2<sup>nd</sup>**

\* There will not be a board meeting held in June. Silver Strings will not meet in July.

\* Bob proposed the purchase of two 12'x 20' Easy Ups for the club to use at Evert, Midland and any SSDS events where they were needed. The proposal was brought to the membership for a vote and the result was in favor of the purchase.

\* Niemczewski's and McAuliffe's will space their RVs at the Evert Dulcimer Festival so that the Easy Ups will fit between the RVs for jamming. This will save SSDS money.

\* Midland Folk Festival: The club will lease a lot close Niemczewski's and McAuliffe's RVs (as we did in 2012) for jamming.

Respectfully Submitted . . . . . Sharon McAuliffe  
*This is a synopsis. Full board minutes are available from Sec.*

**MARK YOUR CALENDAR**

**JUNE**

4...**Playdate** . . . . . **BC** . . . . . 3:00-4:00  
 Heartland Health Care . . . . . Canton

7-9...**Annual SSDS Campout**  
 Myers Lake Campground . . . . . Byron, MI

**JULY**

18-21...**Evert Dulcimer Funfest**  
 Osceola County Fairgrounds . . . . . Evert

24...**Playdate** . . . . . **BC** . . . . . 1:30 -2:30  
 Heartland Health Care . . . . . Dearborn Heights

27...**Playdate** . . . . . **BC** . . . . . 1:00-2:00  
 Pinckney Palooza . . . . . Pinckney

**AUGUST**

6...**Playdate** . . . . . **BC** . . . . . 3:00-4:00  
 Heartland Health Care . . . . . Canton

13...**Playdate** . . . . . **BC** . . . . . 12:00-1:00  
 Birmingham Senior Center . . . . . Birmingham

**BC=Business Casual, C=Casual**

**There will be no board meeting in June.**

**EVERT 2013 PRE-SHOW TUNES**

- Golden Slippers (2xD/2xG)
- Red Wing (G)
- Scotland the Brave (D)
- Prairie Flower (G)
- Peters Kick (G) - Dee Dee Tibbits
- Old Joe Clark (D)
- Sophrina (G) - Les Raber
- Spider on the Bedpost (D) - Rick Thum
- Maple Sugar (D/A)
- Hey Polka (D)
- Star Spangled Banner

**To print the May play list,**

please click on our website or this link :

<http://www.silverstrings.org/sections/tunes/pdf/2013/may13.pdf>

**April, May and June Play List**

Key	Tune	Play
G	Redwing	3
D	Viola's Schottische	3
G	Westphalia Waltz	2
D	Coleman's March	3
D	Beaumont Rag	3
D/A	Maple Sugar	3 ½
G	March of St. Timothy	3
D	Midnight on the Water	2
G	Columbus Stockade Blues	4
D	Possum up a Gum Stump	3
G	Silver and Gold Two Step	3
D	Over The Waterfall/ Mississippi Sawyer	3/2
D	Young Roddy McCorly	4
D	Hey Polka	4
Em	Road To Lisdoonvarna/ Riding on a Load of Hay	3/2
D	Painter's Polka	3
G	Rosin The Beau	3
D	Chinese Breakdown/Nelly Bly	2/3
D	Old Joe Clark	3
G	Down Yonder	4
	<b>* Check with Linda or on sign-up sheets to see if chairs are needed</b>	

**Silver Strings Dulcimer Society Music:**

We have been given permission, by several composers, to play their music in our club. We also pay for a license that allows us to play some of our favorite tunes. We want to protect our Silver Strings members and respect the composers who have generously shared their music with us. In consideration of the composers and SSDS, do not sell, copy, give away or share any of our Silver Strings music.

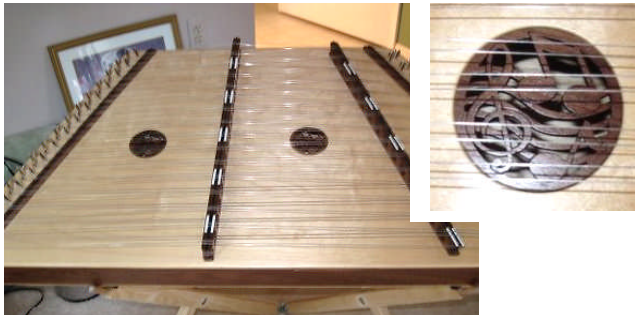
## Hammered Dulcimer for Sale

Made by David's Dulcimers.

Bought at the festival in Evert for around \$400.  
It has a padded canvas case, stand, two hammers, a beginners book, and a tuning wrench.

Anyone interested email:

Betty-Sue/Elizabeth: [jbgault@comcast.net](mailto:jbgault@comcast.net)



## Acoustic Musicians Welcome at the Wilson Barn



The Wilson Barn would like to welcome musicians to play outdoors during the 2013 Farmers Market. The market is open 8:00 a.m. to 2:00 p.m. every Saturday from June 22 through September 28.

It is an opportunity for musicians of all ages to share their talents and also to get performance practice before a changing audience. Whether you're a solo performer or a group, young or not-so-young, we hope to see you at the Barn this summer.

The Barn is located at the corner of Middlebelt and West Chicago Roads (between Joy and Plymouth Road) in Livonia.

For more information, please call 734-427-4311.

[www.wilsonbarn.us](http://www.wilsonbarn.us)



Support your local farmers markets

## FESTIVALS-WORKSHOPS-JAMS

### UNCLE CARL'S DULCIMER CLUB

2<sup>nd</sup> Saturday of month 12:30-4:30pm (no meetings Jun-Aug)

For info. call Pennye 517-547-7448

### NETTLE LAKE MUSIC JAM

First Saturday of Month – 6pm (next is Jun 1<sup>st</sup>)

For info contact Jack & Marilyn Mullins 517-270-2870

### MAUMEE STREET MUSIC JAM

(formerly called West Adrian Jam)

Forth Saturday of the month – 6pm (no meetings Jun-Aug)

For info. contact

Jack & Marilyn Mullins 517-270-2870

Or Larry Roper 248-437-5403

### SUGAR (Saginaw Ukulele Gurus and Rookies)

First Saturday of the month 10:30-Noon (Jun 1<sup>st</sup>)

Now at Sullivan's Restaurant on Gratiot in Saginaw, MI

Songs are posted beforehand on the internet

For info email: [muzyka2007@yahoo.com](mailto:muzyka2007@yahoo.com)

### MT. HALEY JAMBOREE

Last Friday of every month (Jun 28<sup>th</sup>)

Mt. Haley Township Hall, Midland County

For Info contact Alice Perry at: [mthaleyfmsm@gmail.com](mailto:mthaleyfmsm@gmail.com)

1:00-4:00-Folk and Traditional Music Jam

Clubs and individuals are welcome.

Come to play or listen. Admission is free but donations to the Metamora Historical Society are appreciated. Metamora's 1888 Old Town Hall is part of an historic community.

For info. Call Alice Gajewski at 248-628-5287 or go to [FolkJam.com](http://FolkJam.com)

### GREAT LAKES UKULELE GATHERING

First Wednesday of the month 7:00 (Jun 5<sup>th</sup>)

Good Hope Lutheran Church, 28680 Cherry Hill, Garden City

Ukulele players of all abilities can strum and sing.

A donation of \$3.00 is requested for the church.

Contact: Bob at [bsnemo@yahoo.com](mailto:bsnemo@yahoo.com) or

David at [musicalcraft@yahoo.com](mailto:musicalcraft@yahoo.com)

### PITTSFIELD OPEN BAND

Pittsfield Grange 3337 Ann Arbor-Saline Road, Ann Arbor,

First and third Saturday from 3-6pm.

Our jam sessions are free and open to all interested musicians.

We play jigs, reels, and waltzes as played for contra dancing.

The goals are to have fun, learn more tunes, and develop our contra dance musician skills.

<http://www.aactmad.org/sa/pob.html>

### LAMS - Livingston Acoustic Musical Society

3<sup>rd</sup> Saturday of the month (Jun 15<sup>th</sup>)

Fowlerville Church of the Nazarene

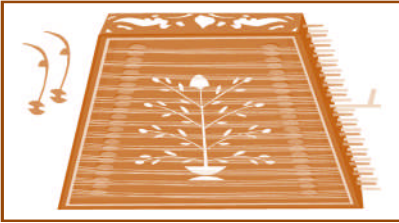
8040 Country Corner Drive, Fowlerville

Share musical talents and appreciation for music, song and other forms of joyful noise on the 7:00-11:00

Contact: Tony Miceli 517-223-9590

## MEDIC - ALERT CARDS

If you have not filled out an emergency information card yet, PLEASE DO. They are the green cards in the brown recipe box at the business table at all meetings. These go with us to all SSDS activities (social or business). They are kept for family contact in case you have a medical emergency when you are with us. If you have new medical info since you filled yours out, please update it with a new card.



The **O.D.P.C.** is excited to introduce a new weekday, daytime jam in Fowlerville, MI. If you don't like to drive at night, then

we hope this helps. If you are still working and can't attend all day, then come for the evening. We'll take a break during the day and then back to the music again.

After the long winter, we hope this gives you more opportunities to do what we all love: play music. All are welcome!

Our first session will be held on Thursday, May 23rd from 10:00 a.m. to 9:00 p.m. at the Fowlerville Church of the Nazarene. After this first session, we will change to the second Thursday of the month. We are currently scheduled for: June 13<sup>th</sup>, Skip July, August 8<sup>th</sup>, and September 12<sup>th</sup>.

This has been a goal of the O.D.P.C. board since 2008. Through the dedicated effort of Freeman Gilmore, we have been able to make it happen. If you have any questions, please feel free to contact Freeman Gilmore at (517) 410-9224 or Kathy Rayman at (586) 709-6180. Hope we see you there.

Directions to jam: Jam is at the Church of the Nazarene in Fowlerville. At the Fowlerville exit from the I-96, go south; look for building, on the right, with white cross on it facing the road. The church is less than a block from I-96 and is the north part of a strip mall.

Fowlerville Church of the Nazarene  
8040 Country Corner Drive  
Fowlerville, MI 48836  
<http://www.fowlervillenazarene.org/>

**Great Lakes Ukulele Gathering**

invites ukulele players of all abilities to join us for monthly meetings where we will strum and sing. All music will be projected onto a screen so that we can all follow the lyrics and chords. So bring your Ukulele and your Voice for a good time. Our monthly meetings will begin at 7 p.m. on the first Wednesday of the month beginning in January 2013. A donation of \$3.00 is requested for the use of the church. Refreshments and snacks will be provided and you are welcome to bring snacks to share.

**GOOD HOPE LUTHERAN CHURCH , 28680 CHERRY HILL, GARDEN CITY, MI.**  
between Inkster and Middlebelt Roads

For further information contact  
Bob: [bsnemo@yahoo.com](mailto:bsnemo@yahoo.com) or David: [musicalcraft@yahoo.com](mailto:musicalcraft@yahoo.com)  
Join us on Facebook, search under *Great Lakes Ukulele Gathering*

**A paraprosdokian is a phrase or sentence that leads us down the garden path to an unexpected ending.**

*"Where there's a will, I want to be in it," is a paraprosdokian -- Winston Churchill loved them.*

1. Do not argue with an idiot. He will drag you down to his level and beat you with experience.
2. A clear conscience is the sign of a fuzzy memory.
3. You do not need a parachute to skydive. You only need a parachute to skydive twice.
4. Money can't buy happiness, but it sure makes misery easier to live with.
5. There's a fine line between cuddling and holding someone down so they can't get away.
6. I used to be indecisive. Now I'm not so sure.
7. You're never too old to learn something stupid.
8. To be sure of hitting the target, shoot first and call whatever you hit the target.
9. Nostalgia isn't what it used to be.
10. Change is inevitable, except from a vending machine.
11. Going to church doesn't make you a Christian any more than standing in a garage makes you a car.
12. Where there's a will, there are relatives.

## Silver Strings Dulcimer Society

Meetings on the 1<sup>st</sup>, 3<sup>rd</sup>, and 5<sup>th</sup> Thursdays every month  
7-9p.m .... with jamming till ...?

Meeting at **Good Hope Lutheran Church**  
In Garden City, Michigan

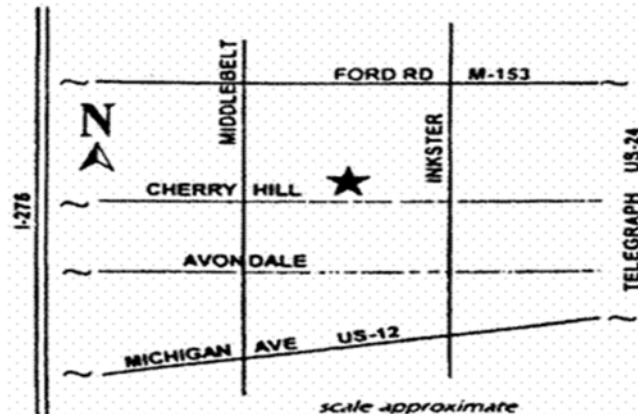
Featuring the hammered dulcimer, mountain dulcimer,  
and other acoustic band instruments :  
banjo, guitar, autoharp, fiddle, string bass, washtub  
bass, mandolin, folk harp, recorder, tin penny whistle,  
and harmonica.

Learn new tunes and techniques, jam together  
with other players, receive new music  
and a monthly newsletter.

Participate in workshops, festivals, performances,  
picnics, fun and fellowship.

**VISIT OUR WEBSITE AT :**  
<http://www.silverstrings.org>

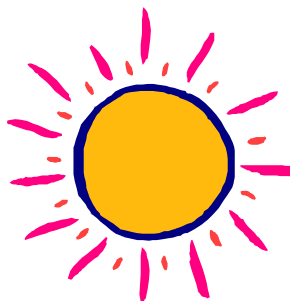
**Everyone is welcome !**  
**Come to listen, or come to play.**



Start thinking about getting articles for the newsletter to me by the 20<sup>th</sup>.  
Articles or pictures from any member are always welcome.

### Silver Strings Dulcimer Society

P.O.Box 1116  
Garden City, MI. 48136



**IT'S JUNE...!**  
**HAPPY CAMPING**

### SSDS BOARD OF DIRECTORS – 2013

**PRESIDENT** ..... **Bob Niemczewski**  
bsnemo@yahoo.com ..... (313) 561-3410

**V.P. BUSINESS** ..... **Linda Osgood**  
losgood10424@comcast.net ..... (734)-487-4543

**V.P. PROGRAMS** ..... **George Gonyo**  
ggonyo@peoplepc.com ..... (734) 996-0089

**TREASURER** ..... **Sally Niemczewski**  
bsnemo@yahoo.com ..... (313) 561-3410

**MUSIC COORDINATOR** ..... **Sharon McAuliffe**  
**SECRETARY** ..... **Sharon McAuliffe**  
ypsi-ds@sbcglobal.net ..... (734) 482-2902

**SOUNDBOARD EDITOR** ..... **Lee Ann Lack**  
leelack@att.net ..... (734) 612-1172

**WEBMASTER** ..... **Karen Turner**  
karenturner@comcast.net ..... (734) 455-4085